



FLOWCOLOUR



PRODUCT CATALOG

2026

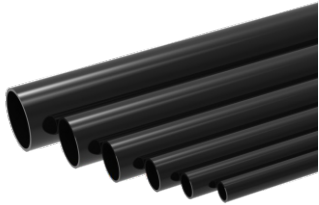
Professional system pipeline service provider



www.flowcolour.cn
 Info@flowcolour.cn
 Facebook: www.facebook.com/Flowcolour

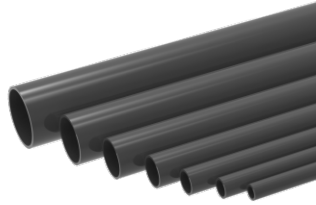


FLOWCOLOUR MULTICOLOR PIPE SERIES



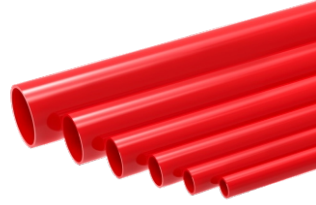
Black Pipe

Standard:	DIN
Size:	20-50mm
	DN15-DN40



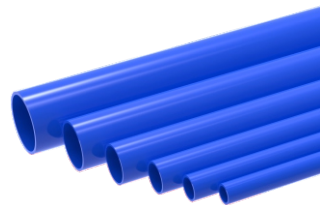
Gray Pipe

Standard:	DIN
Size:	20-160mm
	DN15-DN150



Red Pipe

Standard:	DIN
Size:	20-63mm
	DN15-DN50



Blue Pipe

Standard:	DIN
Size:	20-50mm
	DN15-DN40



Orange Pipe

Standard:	DIN
Size:	20-50mm
	DN15-DN40



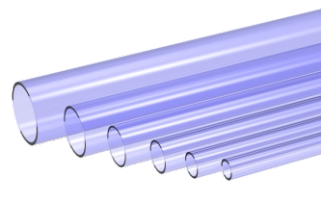
Purple Pipe

Standard:	DIN
Size:	20-50mm
	DN15-DN40



White Pipe

Standard:	DIN
Size:	20-50mm
	DN15-DN40



Clear Pipe

Standard:	DIN
Size:	20-160mm
	DN15-DN150



PMMA Pipe

Standard:	DIN
Size:	20-50mm
	DN15-DN40



www.flowcolour.cn
 Info@flowcolour.cn
 Facebook: www.facebook.com/Flowcolour

FLOWCOLOUR GREY SERIES



90° Elbow

Standard:	DIN
Size:	20-63mm
	DN15-DN50



45° Elbow

Standard:	DIN
Size:	20-63mm
	DN15-DN50



Tee

Standard:	DIN
Size:	20-63mm
	DN15-DN50



Coupling

Standard:	DIN
Size:	20-63mm
	DN15-DN50



Cap

Standard:	DIN
Size:	20-63mm
	DN15-DN50



Reducing Bushing

Standard:	DIN
Size:	16-20mm
	DN10*DN15



Female Reducer Bushing

Standard:	DIN, ANSI, JIS
Size:	20mm*1/4"-32mm*3/4"
	16A*1/4"-25A*1/4"



Male * Female Reducer Bushing

Standard:	DIN, ANSI
Size:	3/8"*1/2"-1"*3/4"



Single Spigot Elbow

Standard:	DIN
Size:	20-50mm
	DN15-DN40



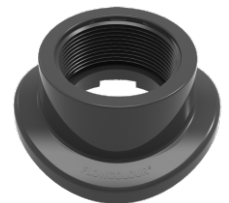
Single Spigot Tee

Standard:	DIN
Size:	20-50mm
	DN15-DN40



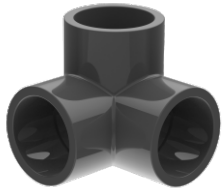
Single Spigot 45° Elbow

Standard:	DIN
Size:	20-50mm
	DN15-DN40



Female Sampling Header

Standard:	DIN
Size:	2"x200mm, 2"x250mm



3-Way Elbow

Standard:	DIN
Size:	20-50mm DN15-DN40



4-Way Cross

Standard:	DIN
Size:	20-50mm DN15-DN40



5-Way Cross

Standard:	DIN
Size:	20-50mm DN15-DN40



Y Tee

Standard:	DIN
Size:	20-63mm DN15-DN50



Spigot Hose Adapter

Standard:	DIN
Size:	20-32mm DN15-DN25



Socket Hose Adapter

Standard:	DIN
Size:	20-25mm DN15-DN20



Male Hose Adapter

Standard:	DIN
Size:	1/2"-1" DN15-DN40



Bend Tee

Standard:	DIN
Size:	50mm, 63mm DN40, DN50



Male Adapter

Standard:	DIN
Size:	20mm*3/4", 32mm*3/4" 50mm*1-1/2"



Nipple

Standard:	DIN, ANSI
Size:	3/8"-2" DN10-DN50



Male Cap

Standard:	DIN, ANSI
Size:	20-32mm DN15-DN25



Tri-Clamp Adapter

Standard:	DIN
Size:	20mm/25mm 32mm/50mm/63mm



90° Bend Elbow

Standard:	DIN
Size:	20-63mm DN15-DN50



4d Radius Bocht 45°

Standard:	DIN
Size:	63mm, DN50



4d Radius Bocht 83°

Standard:	DIN
Size:	63mm, DN50



4d Radius Bocht 90°

Standard:	DIN, ANSI SCH40
Size:	63mm, DN50



Socket Union

Standard:	DIN, ANSI SCH40
Size:	20-63mm, 1/2"-2"
	DN15-DN50



Female Union

Standard:	DIN, ANSI SCH40
Size:	20-63mm, 1/2"-2"
	DN15-DN50



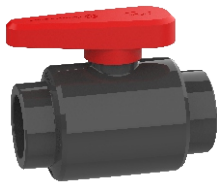
Spigot Union

Standard:	DIN, ANSI SCH40
Size:	20-63mm, 1/2"-2"
	DN15-DN50



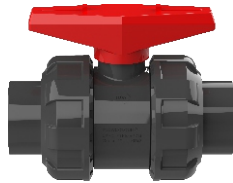
Male Union

Standard:	DIN, ANSI SCH40
Size:	20-63mm, 1/2"-2"
	DN15-DN50



Compact Ball Valve

Standard:	DIN
Size:	20-50mm
	DN15-DN40



True Union Ball Valve

Standard:	DIN, ANSI
Size:	20-50mm
	DN25-DN40



Socket/Spigot Sampling Valve

Standard:	DIN
Size:	8mm*20mm, 12mm*20mm



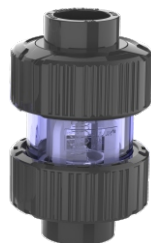
Male Sampling Valve

Standard:	DIN, ANSI
Size:	1/4", 3/8", 1/2"
	8mm, 12mm



Gate Valve

Standard:	DIN, ANSI
Size:	20-63mm, 1/2"-2"
	DN15-DN50



Lifting Check Valve

Standard:	DIN, ANSI
Size:	20-32mm
	DN15-DN25



Swing Check Valve

Standard:	DIN, ANSI
Size:	20-32mm, 1/2"-1"
	DN15-DN25



Spring Check Valve

Standard:	DIN, ANSI
Size:	20-32mm, 1/2"-1"
	DN15-DN25



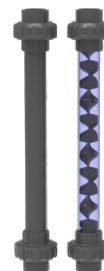
Angle Valve

Standard:	DIN, ANSI
Size:	1/2"-3/4"
	DN15-DN20



Ballvalve Gearbox

Standard:	DIN
Size:	10N
Connection:	ISO5211



Union Static Mixer

Standard:	DIN
Size:	20-90mm
	DN15-DN80



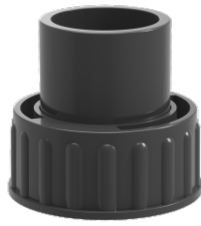
Flanged Static Mixer

Standard:	DIN
Size:	75-110mm
	DN65-DN100



Hose Lock Spigot

Standard:	DIN
Size:	20-32mm
	DN15-DN25



Union Connector

Standard:	DIN
Size:	25mm*32mm
	DN20*DN25



Water Level Control Connector

Standard:	DIN
Size:	40mm
	DN40



Bottom Outlet

Standard:	DIN
Size:	25-32mm
	DN20-DN25



Outlet Connector

Standard:	DIN, ANSI
Size:	20-32mm, 1/2"-1"
	DN15-DN25



Elbow Outlet Connector

Standard:	DIN, ANSI
Size:	20-32mm, 1/2"-1"
	DN15-DN25



Quick Bulkhead

Standard:	DIN
Size:	20-50mm
	DN15-DN40



Quick Bulkhead

Standard:	DIN
Size:	20-50mm
	DN15-DN40



Bulkhead

Standard:	DIN, ANSI
Size:	20-50mm, 1/2"-1-1/2"
	DN15-DN40



Elbow Bulkhead

Standard:	DIN
Size:	20-25mm
	DN15-DN20



Force Drain

Standard:	DIN, ANSI
Size:	20-32mm, 1/2"-1"
	DN15-DN25



Elbow Force Drain

Standard:	DIN
Size:	20-32mm
	DN15-DN25



Force Drain Ball Valve

Standard:	DIN
Size:	20-32mm
	DN15-DN25



Double End Rotating Water Outlet

Standard:	DIN
Size:	25-32mm
	DN20-DN25



Hose Check Valve

Standard:	DIN
Size:	12.5mm, 16.5mm
	21mm, 26mm



Aquarium Pipe Clip

Standard:	DIN
Size:	25-32mm
	DN25-DN40



UV Sterilizer (Large Size)

Standard:	DIN
Size:	DN50(80W)
Colour:	Clear, Gray



UV Sterilizer (Small Size)

Standard:	DIN
Size:	DN25
Power:	10W\15W\20W



Spigot Screen

Standard:	DIN
Size:	20-63mm
	DN15-DN50



Thread Screen

Standard:	DIN
Size:	20-50mm, 1/2"-2"
	DN15-DN40



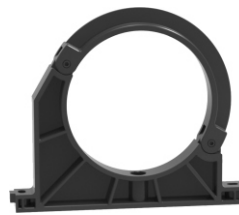
Divider Plate

Standard:	DIN
Size:	265.6*202mm
Colour:	Clear, White, Black



Pipe Clip

Standard:	DIN
Size:	32-160mm,
	DN25-DN150



Pipe Clip

Standard:	DIN
Size:	200mm,



www.flowcolour.cn

Info@flowcolour.cn

Facebook: www.facebook.com/Flowcolour



FLOWCOLOUR WHITE SERIES



90° Elbow

Standard:	DIN
Size:	20-50mm
	DN15-DN40



45° Elbow

Standard:	DIN
Size:	20-50mm
	DN15-DN40



Tee

Standard:	DIN
Size:	20-50mm
	DN15-DN40



Coupling

Standard:	DIN
Size:	20-50mm
	DN15-DN40



Cap

Standard:	DIN
Size:	20-50mm
	DN15-DN40



Reducing Bushing

Standard:	DIN
Size:	16-20mm
	DN10*DN15



90° Bend

Standard:	DIN
Size:	20-32mm
	DN15-DN25



Union

Standard:	DIN, ANSI SCH40
Size:	20-63mm, 1/2"-2"
	DN15-DN50



Female Union

Standard:	DIN, ANSI SCH40
Size:	20-63mm, 1/2"-2"
	DN15-DN50



Socket Hose Adapter

Standard:	DIN
Size:	20-25mm
	DN15-DN20



Spigot Hose Adapter

Standard:	DIN
Size:	20-32mm
	DN15-DN25



Male Hose Adapter

Standard:	DIN
Size:	20-32mm
	1/2"-1"

FLOWCOLOUR WHITE SERIES



Single Spigot Elbow

Standard:	DIN
Size:	20-50mm
	DN15-DN40



Single Spigot Tee

Standard:	DIN
Size:	20-50mm
	DN15-DN40



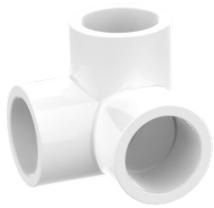
Single Spigot Elbow

Standard:	DIN
Size:	20-50mm
	DN15-DN40



Hose Lock Spigot

Standard:	DIN
Size:	20-32mm
	DN15-DN25



3-Way Elbow

Standard:	DIN
Size:	20-50mm
	DN15-DN40



4-Way Cross

Standard:	DIN
Size:	20-50mm
	DN15-DN40



5-Way Cross

Standard:	DIN
Size:	20-50mm
	DN15-DN40



Quick Bulkhead

Standard:	DIN
Size:	25-50mm
	DN20-DN40



Quick Bulkhead

Standard:	DIN
Size:	25-50mm
	DN20-DN40



Bulkhead

Standard:	DIN, ANSI
Size:	20-50mm
	DN15-DN40



Elbow Bulkhead

Standard:	DIN
Size:	20-32mm
	DN15-DN25



Force Drain

Standard:	DIN
Size:	20-32mm
	DN15-DN25



Elbow Force Drain

Standard:	DIN
Size:	20-32mm
	DN15-DN25



Lifting Check Valve

Standard:	DIN, ANSI
Size:	20-32mm
	DN15-DN25



Swing Check Valve

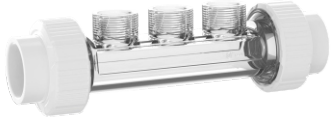
Standard:	DIN, ANSI
Size:	20-32mm
	DN15-DN25



Spring Check Valve

Standard:	DIN, ANSI
Size:	20-32mm
	DN15-DN25

FLOWCOLOUR WHITE SERIES



Sensor Holder

Standard:	DIN, ANSI
Size:	32-40mm, 1"-1-1/4"
	DN25-DN32



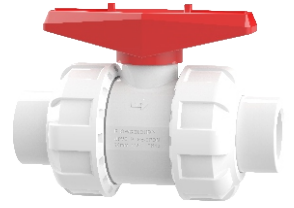
Gate Valve

Standard:	DIN, ANSI
Size:	20-63mm
	DN15-DN50



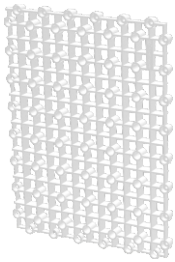
Compact Ball Valve

Standard:	DIN
Size:	20-50mm
	DN15-DN40



True Union Ball Valve

Standard:	DIN, ANSI
Size:	20-50mm
	DN25-DN40



Divider Plate(PE)

Standard:	DIN
Size:	265.6mm*202mm



Foot(PE)

Standard:	DIN
Size:	8*30*17.5mm



www.flowcolour.cn
 Info@flowcolour.cn
 Facebook: www.facebook.com/Flowcolour

FLOWCOLOUR BLACK SERIES



90° Elbow

Standard:	DIN
Size:	20-50mm
	DN15-DN40



45° Elbow

Standard:	DIN
Size:	20-50mm
	DN15-DN40



Tee

Standard:	DIN
Size:	20-50mm
	DN15-DN40



Coupling

Standard:	DIN
Size:	20-50mm
	DN15-DN40



Cap

Standard:	DIN
Size:	20-50mm
	DN15-DN40



Cross

Standard:	DIN
Size:	20-32mm
	DN15-DN25



Y Tee

Standard:	DIN
Size:	20-63mm
	DN15-DN50



Socket Union

Standard:	DIN
Size:	20-50mm
	DN15-DN40



Thread Laval Water Outlet

Standard:	DIN
Size:	20-32mm
	1/2"-1"



Spigot Triangle Water Outlet

Standard:	DIN
Size:	20-32mm
	DN15-DN25



Thread Triangle Water Outlet

Standard:	DIN
Size:	20-32mm
	1/2"-1"



Spigot Laval Water Outlet

Standard:	DIN
Size:	20-32mm
	DN15-DN25

FLOWCOLOUR BLACK SERIES



Bulkhead

Standard:	DIN, ANSI
Size:	20-50mm, 1/2"-1-1/2"
	DN15-DN40



Elbow Bulkhead

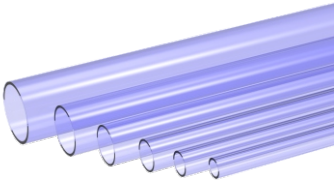
Standard:	DIN
Size:	20-25mm
	DN15-DN20



Ribbed Hosing

Standard:	DIN
Size:	20-50mm;DN15-DN40
	30cm, 50cm, 100cm

FLOWCOLOUR CLEAR-PVC SERIES



Clear Pipe

Standard:	DIN
Size:	20-160mm
	DN15-DN150



90° Elbow

Standard:	DIN, ANSI
Size:	16-63mm, 1/2"-2"
	DN10-DN50



45° Elbow

Standard:	DIN, ANSI
Size:	20-63mm, 1/2"-2"
	DN15-DN50



Coupling

Standard:	DIN, ANSI
Size:	16-63mm, 1/2"-2"
	DN10-DN50



Tee

Standard:	DIN, ANSI
Size:	16-63mm, 1/2"-2"
	DN10-DN50



Cap

Standard:	DIN
Size:	16-63mm
	DN10-DN50



Male Adapter

Standard:	DIN
Size:	20-63mm, 1/2"-2"
	DN15-DN50



Sensor Holder

Standard:	DIN, ANSI
Size:	32-63mm, 1"-2"
	DN25-DN50



Socket Calibration Column

Standard:	DIN
Size:	32mm*100mL
	40mm*200mL



Female Calibration Column

Standard:	DIN
Size:	1/2"*100mL

FLOWCOLOUR PMMA SERIES



Clear Pipe

Standard:	DIN
Size:	20-50mm
	DN15-DN40



90° Elbow

Standard:	DIN
Size:	20-50mm
	DN10-DN40



45° Elbow

Standard:	DIN
Size:	20-32mm
	DN15-DN25



Coupling

Standard:	DIN
Size:	20-50mm
	DN10-DN40



Tee

Standard:	DIN
Size:	20-50mm
	DN10-DN40



Cap

Standard:	DIN
Size:	20-32mm
	DN15-DN25



Male Adapter

Standard:	DIN
Size:	20mm*3/4", 32mm*3/4"
	50mm*1-1/2"



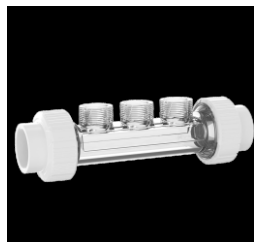
Nut(PC)

Standard:	DIN
Size:	3/4", 1-1/2"



Triangular Sweeper

Standard:	DIN
Size:	20-32mm
	DN15-DN25



Sensor Holder

Standard:	DIN, ANSI
Size:	32-40mm, 1"-1-1/4"
	DN25-DN32



FLOWCOLOUR

FLOW CREATE VALUE



Shandong Flowcolour Fluid Technology Co.,Ltd

Add: A1297 Guangming East Road, Shizhong District, Zaozhuang City, Shandong Province

www.flowcolour.cn

Email: Info@flowcolour.cn

Facebook: Flowcolour